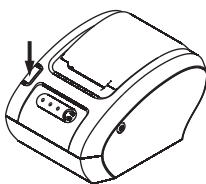




User's Manual

GP-58130IVC

THERMAL RECEIPT PRINTER



Proficient in Commercial POS Receipt printers

1. Safety Notice:

- * Install the printer on stable place, choose a firm, level surface where avoid vibration.
- * Do not use and store the printer under high temperature, humid or seriously polluted environment.
- * Connect AC power adapter to a proper power outlet. Avoid to use the same outlet with other large electric machines which generate voltage fluctuation.
- * Do not let water or conducting material (eg. metal) into the printer.
- * Do not print when it is out of paper, which will seriously damage the printer head and rubber roller.
- * We recommend that you unplug the printer from the power outlet whenever you do not plan to use it for a long period.
- * Do not try to disassemble, repair or remodel the printer by yourself.
- * Only use the power supply that is come along with the printer.
- * We recommend that you use good paper to deliver high quality receipts and to ensure the printer's lifespan.
- * Make sure that printer is off when connecting or disconnecting the plug, always hold the plug - not the cord.
- * Please keep this manual for your reference.

2. Applications:

- * POS system receipts
- * EFT POS system receipts
- * Gym, post, hospital, civil aviation system receipts
- * Inquiry, service system receipts
- * Instrument test receipts
- * Tax, Tab receipts

3. Unpacking

After unpacking the unit, check that all the necessary accessories are included in the package.

User's Manual	1 PCS
Printer	1 PCS
Data Cable	1 PCS
Power Adapter (include power cord)	1 SET

4. Main Features:

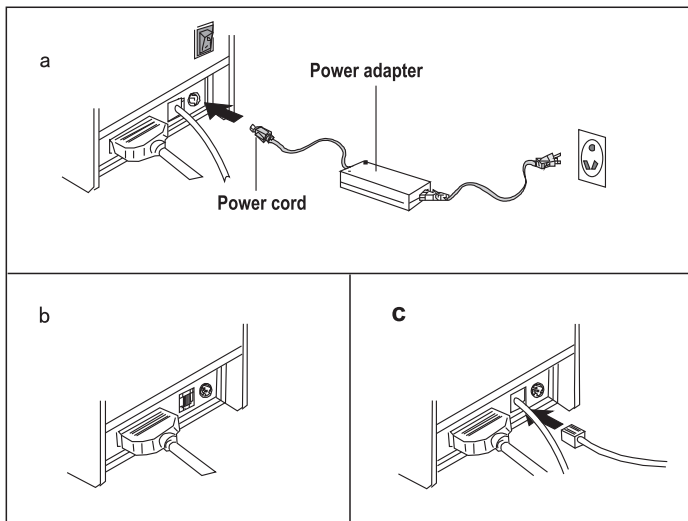
- * 130mm/sec printing speed.
- * 85mm large paper roll.
- * 150KM mechanism lifespan, 1,000,000 times cutter lifespan.
- * Various interface options including Parallel, Serial, USB, Ethernet.
- * Built-in data buffer.
- * Characters can be enlarged, bold, underlined. Line space and left & right space can be adjusted.
- * Support different density NV logo and download printing.
- * Support Linux driver.
- * Compatible with ESC/POS printing command set.

5. Technique Spec.

Print method	Thermal line printing
Print speed	130mm/sec
Paper width	57.5±0.5mm
Print columns	384dots/line
Character	ANK Character: Font A: 12×24dots Font B: 9×7dots Simplified/Traditional Chinese: 24×24dots
Print command	Compatible with ESC/POS command set
Interface	Serial+USB / Parallel / Ethernet
Barcode mode	UPC-A/UPC-E/JAN13(EAN13)/JAN8(EAN8)/ CODABAR/CODE39/CODE93/CODE128
Reliability print	150Km
Paper thickness	0.06~0.08mm
Power adapter input	AC 110V/220V, 50~60Hz
Power adapter output	DC 12V/3A
Printer Input	DC 12V/3A
Cash Drawer	DC 12V/1A
Work Environment	Temperature : 0~45℃, Dampness: 10~80%
Storage Environment	Temperature : -10~60℃, Dampness: 10~90%

6. Connection

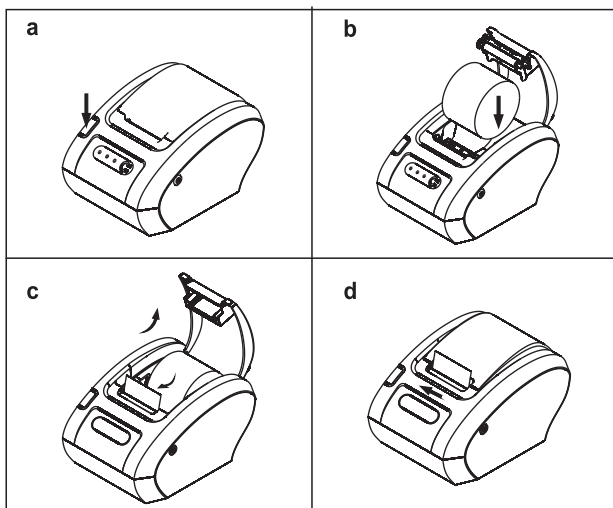
- a. Connect the adapter cable to power connector of the printer.
- b. Connect the interface cable to the connector on the rear panel of the printer.
- c. Connect the cash drawer's RJ-11 phone jack to the connector on the rear panel.



7. Paper Roll Installation

- a. Press the button to open the top cover.
- b. Set the paper roll into the hollow.
- c. Pull the leading edge of the paper outside the hollow.
- d. Press the center of printer cover firmly to close it, then tear off the paper outside the cover as shown.

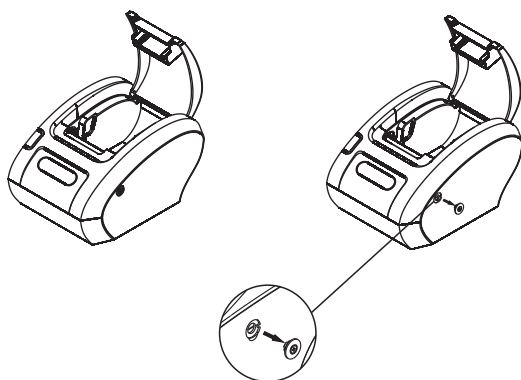
NOTE: Take 58130IVC for example, other models in this range are similar.



8. Paper jam solution

When printer cutter jamed and the top cover can not be opened, please turn off the power, restart it again to initialize the printer, then cutter will return to normal status. If failed, use cross screwdriver to manually adjust the unit device, return the cutter to its home position, then cover will open. Attention: Do not use force to separate the top cover from printer, in case of the print mechanism damaging.

NOTE:Take 581301VC for example, other models in this range are similar.

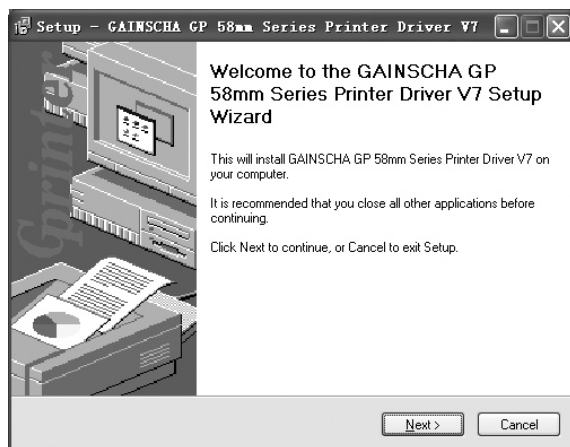


Dip Switches Function:

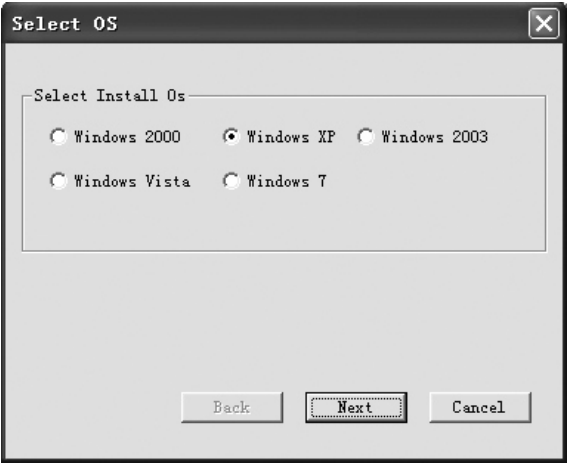
Interface	DIP-8	Function		ON	OFF
	SW-1	Select cutter		No	Yes
	SW-2	Select beeper		Yes	No
	SW-3	Select print density		Dark	Light
	SW-4	Two-byte character code		No	Yes
	SW-5	Character per line		42	48
	SW-6	DK(RJ11)port output signal		Yes	No
Serial	SW-7	ON	OFF	ON	OFF
	SW-8	ON	ON	OFF	OFF
	Baud rate	38400	115200	9600	19200
Parallel& Ethernet	SW-8	ON		OFF	
	Print mode	Driver mode		Normal mode	

9. Driver Installation

- Insert the bundled CD disk into the CD-ROM drive, in the CD-Rom menu, click DRV58EN V7.0G file to begin driver installation



b. Please choose the OS that matches with your computer system and press next.



c. Please select GP-58130IC/IIC/IIIC/IVC or GP-58120III Series for Install module.
Please select GP-58130MI/MII or GP-5890XIII Series for Install module.

