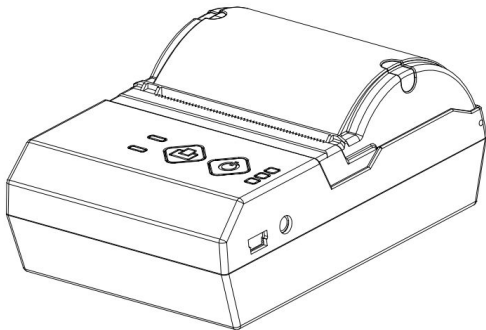


Portable Thermal Printer

User Manual



Please read this manual carefully before using it, and keep it for future reference

Portable Thermal Printer User Manual

About this manual

Thank you for your purchase of our company's 58MM thermal printer.

This manual can help you learn to use this product. Please read this manual before use, and safekeeping, so that all the use of this product can read it.

Note

Due to our constant efforts to improve and upgrade the product's function and performance, our company reserves the right to change the hardware and software specifications in the manual without prior notice.

If you find any errors or missions in the contents of this manual, please tell us or our agent,thank you very much.

Without the prior written permission of our company, the contents of the relevant manual attached to the product shall not be reproduced, transmitted, transcribed, stored, etc..

Statement

This product is type A product, may cause the radio interference in the living environment , in this case,the user need to protect the interference with effective protection measure

Safety tips

Please follow the following notes when using the printer

- Do not disassemble the printer personally, pls read this manual before use.
- Please shut off the power supply when the failure occurs. When you find that the printer power adapter or battery smoke or has bad smell, please unplug the power adapter immediately, and take out the battery, pls note to avoid being burned.
- Please do not use the printer at the gas station, fuel warehouse, etc.
- When charging, please put the printer and the power adapter on the ventilation place with environment temperature $-5^{\circ}\text{C}\sim 40^{\circ}\text{C}$, and use the manufacturers standard power adapter. The use of unauthorized power adapters may cause danger, and violation of the manufacturer's warranty terms.

Portable Thermal Printer User Manual

- When the printer is printing, please do not open the paper cover, otherwise it may appear unexpected situation, and even damage the printer.
- After printing, print head is still at high temperature, do not touch, so as not to burn.
- Pls do not use dissolved substances, such as: benzene, thinner or alcohol wipe to clean the printer casing. At the same time, please do not use corrosive chemicals and detergent to contact printer. To avoid damage to the printer.
- Pls use our company approved or regular factory produced printing paper, otherwise it may lead to poor print quality, and even damage the printer core.
- If you have to store the printer for a long time, please be sure to remove the battery in the printer and for separate storage, otherwise may cause the battery failure, and even leakage, and then damage the printer.
- Before replacing the battery, please make sure that the printer has been shut off. If you use the power adapter, please confirm that the power supply has been cut off.

Portable Thermal Printer User Manual

- Thermal printing paper printing letter save time is related to thermal printing paper quality, if you want to print the long-term preservation bills, please choose a long-term thermal paper.
- The printer is only suitable for using in the altitude below 2000M.
- The printer is only suitable for use in non tropical climates.

Please follow the following precautions when using the battery

- Before use, please read this manual and battery surface identification.
- Pls charge the battery indoor in the appropriate emperature, if charging temperature is too high, will cause the battery heat, smoke, burning or deformation, and even explosion.
- There are special protection circuit and device inside the battery, please do not disassemble the battery, otherwise it will cause short circuit or electrolyte leakage. it has the risk of blindness if electrolyte into the eyes , if accidentally into the eyes, please rinse immediately, and immediately rushed to the hospital for treatment.

Portable Thermal Printer User Manual

- Please do not squeeze, mechanical vibration or shaking the battery, is strictly prohibited to make the battery positive and negative shortcircuit.
- Please do not put the battery into water or other liquid, to cause the battery short circuit, which causes the battery to heat, smoke, or even explode.
- Please do not expose the battery to the sun. Please do not use in the high humidity environment, such as the bathroom, sauna room, etc..

Please replace the battery when the performance requirements can not be met.

- Please put the battery in a place where children can not reach, and prevent the occurrence of danger.
- Once the battery is found deformed, leakage, fever or has other abnormal conditions, please stop using.

Please follow the following precautions when using the power adapter

- Before use, please read this manual and the surface of the power adapter.
- If the power adapter is exposed to water or other conductive liquid, please cut off the power immediately.

Portable Thermal Printer User Manual

- Do not remove or modify the power adapter, it is strictly prohibited to use the power adaptor with damage the power supply line , otherwise it will cause damage to the power adapter and even lead to electric shock, fire and other hazards.
- Please do not short-circuit the power adapter, or violent shaking the power adapter, as to avoid dangerous situations.
- Please do not use the power adapter in the bathroom, sauna and other high humidity environment, no rain.
- Please put the battery in a place where children can not reach,and prevent the occurrence of danger.

Application area

Water and electricity meter reading

Transport, logistics bill printing

Mobile government, police bill printing

Taxi bill printing

Portable Thermal Printer User Manual

Package

Printer 1 PC

Standard power adapter 1 SET

Standard battery 1PC

Paper roll 1 ROLL

USB data line 1 PC

user manual 1 PC

optional accessories

standard COM line 1 PC

standard holster 1 PC

Printer Feature

- Support 1.D,2.D bar code printing
- While compatible with Windows, Linux, Android and IOS systems
- Super battery life, with smart power saving and power consumption control functions , to ensure longer print time
- Support USB, COM and Bluetooth communications
- Support sound and light reminder when lack of paper, printing abnormal
- Anti fall of 1.5M cement floor

Portable Thermal Printer User Manual

Printer Parameter

Item		Parameter
Print parameter	Printing Method	Thermal Line
	Effective Printing Width	48mm
	Resolution	384 dots/line (8dots/mm, 203dpi)
	Printing Speed	70mm/S
	Interface	USB, Serial, Bluetooth
	Line spacing	3.75mm (Can adjust line spacing by command)
	Line No.	Font A:32character /Line Font B:42character/Line Simple/Traditional Chinese:16 characters/Line

Portable Thermal Printer User Manual

	Character	The standard GB18030 simplified / traditional Chinese characters library
	Character Size	ANK character, Font A: 1.5×3.0mm (12×24dots) Font B: 1.1×2.1mm (9×17 dots) Simplified/Traditional: 3.0×3.0mm(24×24 dots)
Barcode character	Extended character set	PC437/Katakana/PC850/PC860/PC863/PC865 /WestEurope/Greek/Hebrew/EastEurope/Iran/ WPC1252/PC866/PC852/PC858/IranII/Latvian/ Arabic/PT151,1251/PC737/WPC/1257/ThaiViet nam/PC864/PC1001/(Latvian)/(PC1001)/(PT15 1,1251)/(WPC1257)/(PC864)/(Vietnam)/(Thai)
	Bar code	1D.Bar code: UPC-A/UPC-E/JAN13(EAN13)/JAN8(EAN8)C ODE39/ITF/CODABAR/CODE93/CODE128

Portable Thermal Printer User Manual

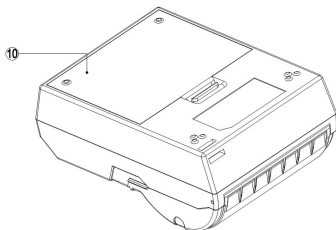
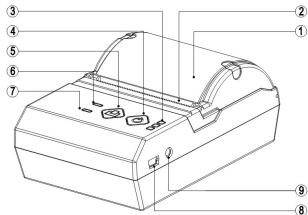
		2D.Bar code: QRCODE
Graphics printing	Graphics printing	Supports bitmap download and print (support each bitmap size Max.8K, download up to 5pcs)
Power saving Mode	Smart power saving	Support
	Variable speed printing	Support
	Consumption	Support
	Dormancy	Support
Dection	Sensor	Lack of paper detection
Paper	Type	Thermal
	Width	57.5±0.5mm
	Diameter	≤40mm

Portable Thermal Printer User Manual

Commands	Commands	ESC/POS
Power	Type	Rechargeable Lithium polymer battery
	Capacity	2000mAh/7.4V
	Charger	9.0V/2A
Physical features	Weight	200G
	Dimension	114*80*50(MM)
Environment	Operating	Temp: 5 ~ 45℃ , Humidity: 10 ~ 80%
	Storage	Temp: -10 ~ 50℃ , Humidity: 10 ~ 90% (No Dew)
Reliability	Print head life	50KM (Printing Density≤12.5)
Software	Driver	Android,IOS,Linux,Win2000,Win2003,WinXP, Win7,Win8,Win8.1

Portable Thermal Printer User Manual

Printer components name:



1. Paper warehouse cover

4. Power button

7. Charge indicator

10. Battery cover

2. Paper window

5. Feed button

8. USB(COM)hub

3. Power indicator

6. Error indicator

9. Supply hub

Interactive interface

1 battery charge indicator

Battery indicator (3 blue lights) full on means battery power is full, only one light on means the battery is about to run out, to ensure normal use, please charge the battery.

2 error indication

The lack of paper status, or printer in abnormal state, error indicator light (red light) flashing, while the internal buzzer to remind each 3 seconds.

3 charge indicator

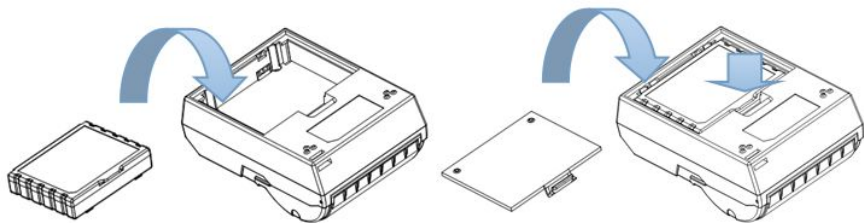
When charging the battery, charging indicator light (red, blue, double color light)shows red, when the battery is full, charging indicator light shows blue. At this time, please pull the power adapter plug, and you can use it normally.

Portable Thermal Printer User Manual

Preparation before use

Battery installation and considerations

Put battery in the battery holder according to Pic and close the battery cover



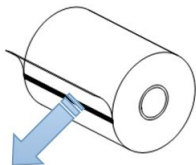
Note: For the first use of the battery, need to charge it full. After the battery is stored for a long time also need to charge it full, then the battery will achieve the best use effect.

Portable Thermal Printer User Manual

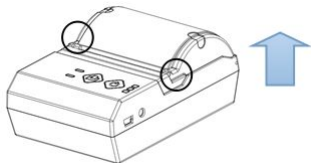
Install the print paper

The HOP-M200 is using thermal paper with diameter 40MM, and width 58MM.

1.remove the seal on the printing paper.

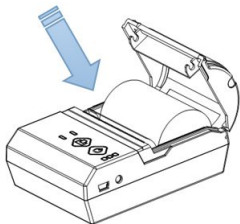


2.Hold the side button of paper holder and open it

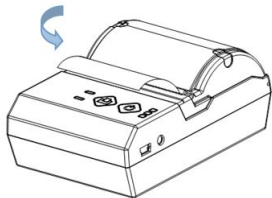


Portable Thermal Printer User Manual

3. Put the paper roll in like below:



4. Put out some paper and close the paper holder, Tear up the excess paper.



Note: pls take care of the paper roll direction, if opposite it can't print the content.

Basic operation:

1 Start

Continue to press the printer power button for 3 seconds, the printer starts.

2 shutdown

when printer is on, continue to press the printer power button for 3 seconds, the printer is powered off.

3 print check page

In Shutdown status and print paper roll are installed well, press the power button and feed button at the same time, when a little paper come, release the power button and feed button at the same time, printer will print a self-test page.

Communication:

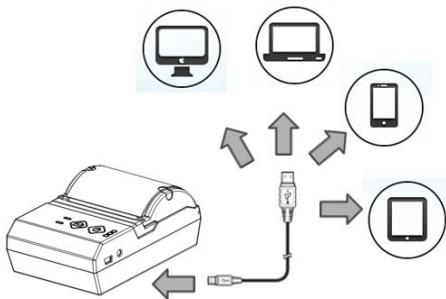
This printer provides the following ways of communication:

- USB communication: Standard USB2.0 protocol
- COM communication (need to be customized): optional COM line
- Bluetooth communication: Bluetooth 3.0 and Bluetooth3.0/4.0 dual-mode

Portable Thermal Printer User Manual

USB communication:

This printer USB interface use standard USB2.0 communication protocol can easily connect to the windows device, androd equipment, Linux equipment, and equipped with corresponding driver and SDK, let your print arbitrarily.

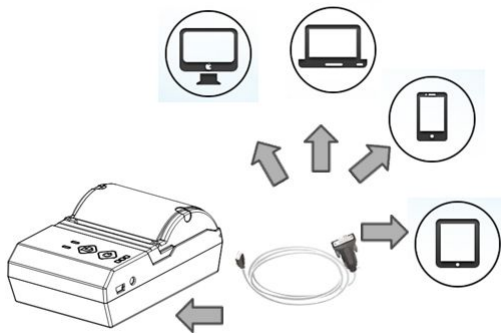


Note: the printer driver and SDK please download from the official website or request from your supplier.

Portable Thermal Printer User Manual

COM communication (optional)

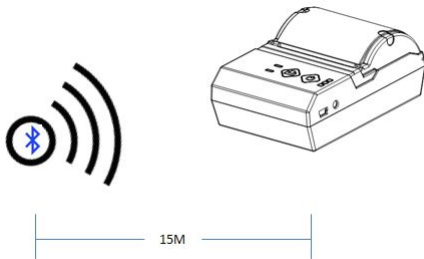
The printer provides standard COM communication (optional), support multi platform interconnection, and the baud rate is adjustable.



Portable Thermal Printer User Manual

Bluetooth communication:

The printer provide Bluetooth 2.0 communication can easily connect to the windows device, androd and IOS devices work, and communication distance up to 15m.



Note:Match password :1234

Portable Thermal Printer User Manual

Printer Repair and maintenance:

1. printer external and warehouse cleaning: please use a wet cloth gently wipe the printer surface and internal paper warehouse.
2. Printer core clean: printer core must be clean on time, especially the quality of printing is decline, cleaning methods are as follows: put cotton dipped in anhydrous alcohol and gently wipe the printer core ceramic parts as shown in the picture below until clean enough.
- 3.If find water inside printer, please immediately disconnect the printer power, and dry the printer naturally.

Failure Analysis:

Failure phenomenon	Failure cause	Solution
Printer red light flashing and make a Di Di... sound	Printer lack of paper	Install paper correctly

Portable Thermal Printer User Manual

When the printer only paper run but not print	Print paper install reverse	Pls install the print paper for a opposite direction
The printer print fuzzy	The print head not clean for a long time	Put cotton dipped in anhydrous alcohol and gently wipe the printer core ceramic parts until clean enough
	The character colour in thermal paper no good	Pls choose high quality thermal paper
Power indicator only has the last lights on	battery is short of power	Pls charge the battery to avoid affect your normal use
The printer shut down automatically	Battery power is off	Pls charge it

FCC Statement

This equipment has been tested and found to comply with the limits for a Class B digital device, pursuant to Part 15 of the FCC Rules. These limits are designed to provide reasonable protection against harmful interference in a residential installation. This equipment generates uses and can radiate radio frequency energy and, if not installed and used in accordance with the instructions, may cause harmful interference to radio communications. However, there is no guarantee that interference will not occur in a particular installation. If this equipment does cause harmful interference to radio or television reception, which can be determined by turning the equipment off and on, the user is encouraged to try to correct the interference by one or more of the following measures:

- Reorient or relocate the receiving antenna.
- Increase the separation between the equipment and receiver.
- Connect the equipment into an outlet on a circuit different from that to which the receiver is connected.
- Consult the dealer or an experienced radio/TV technician for help.

This device complies with part 15 of the FCC Rules. Operation is subject to the following two conditions:(1) This device may not cause harmful interference, and (2) this device must accept any interference received, including interference that may cause undesired operation.

Changes or modifications not expressly approved by the party responsible for compliance could void the user's authority to operate the equipment.