

RETAIL WEIGHING SOLUTION™

CT100^{PLUS} SERIES

CAS Printing Scale

CT100^{PLUS} is a compact scale upgraded by adding speed label printer contrary to the existing CT100, which is only equipped with ticket printer.

Its fast data processing speed is also very effective in retail markets fulfilling high satisfaction to stores and customers.

In addition, users can minimize their fatigue by choosing optional soft key that enables easy PLU sheet change.



Ticket & Label Printing

High resolution and speed printer

Software Compatibility



Ticket & Label Printing



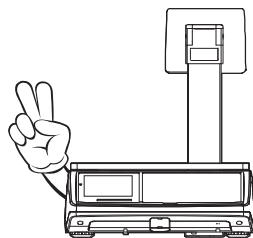
High resolution and speed printer



Legible Display



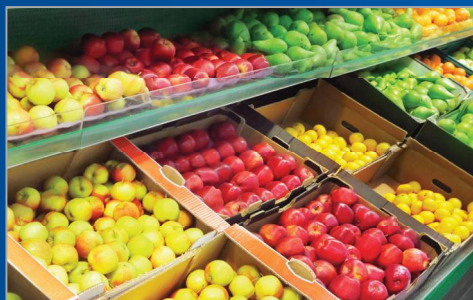
Scan with your
smartphone to find
more products



CAS
www.globalcas.com

CT100^{PLUS} SERIES

CAS Printing Scale



FEATURES

- Ticket & Label Printing

The CT100^{PLUS} provides speed label printer.
Maximum label paper width is 58mm;
diameter is 60mm.

- High resolution and speed printer

In order to secure the quality of printing result
we applied a high resolution printer and its
fast printing speed will minimize waiting time.

- Software Compatibility

CT100^{PLUS} is compatible with CT100.
It is more convenient to replace or
add new CT100^{PLUS} especially for CT100 users.

OPTIONS

- Soft key
- USB Host Function
- Zigbee, Wireless ethernet interface
- Platter PLU cover
- Platter back rail

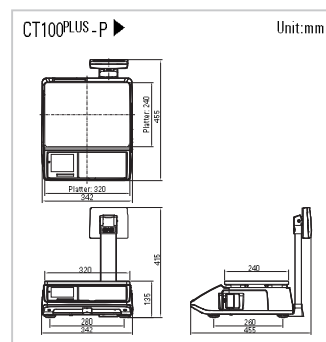
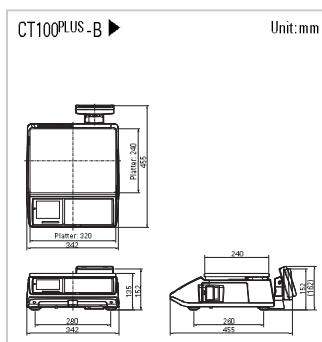
SPECIFICATIONS

Model	CT100 PLUS (Type : bench, pole)		
Max.capacity (kg)	6	15	30
Readability(g)	1/2	2/5	5/10
Resolution	1/3000 (Dual interval)		
Display	Alpha-numeric LCD + backlight -PLU windows:12 digit (14 segment) -Tare/Weight/Unit/Price:5/5/6/7 (7 segment)		
Printer Speed	Max 75mm/sec		
Printer Resolution	Thermal printer-32Characters per line Recommended size for thermal paper - 58mm(Width)/60mm (MaximumDiameter)		
Interface	Default: RS-232c 2EA, RJ11, RS-485, LAN, USB device Option:USB Host, Zigbee, WLAN		
Operating temperature	-10°C~+40°C		
Power	AC 230V(50 ~ 60Hz), AC + DC(Optional), Pb Battery 12V/7A		
Battery life	RechargeableBattery(inside): 12V 7Ah(Pb)		
	Battery life(continuous usage)	With backlight :265mA, 26hrs	
	Weighing Modeonly :240mA, 28hrs	With printer :1800mA, 4hrs	
Dimensions(mm)	B type :342(W) X 455(D) X 152(H) P type :342(H) X 455(D) X 415(H)		
	PLATTER SIZE :320(W)X240(D)		
Product weight (kg)	B type :6.8		P type :8

APPLICATIONS

- European open market
- European butcher
- Candy market
- Bakery & deli

Dimensions



CAS BLDG., 1315, YANGJAE-DAERO,
GANGDONG-GU, SEOUL, KOREA

TEL_ 82 2 2225 3500

FAX_ 82 2 475 4668

Specifications are subject to change for improvement without prior notice.

<http://www.globalcas.com>

CAS