

The complete Retail POS Ecosystem

Excite. Entrust. Enrich





○ About ESY	01
○ Awards & accolades	02
○ Touch POS Machines	03-08
○ Cash Registers	09-12
○ POS Thermal Printers	13-15
○ Cash Drawers	16
○ Barcode Scanners	17-20
○ Label Printers	21-28
○ Mobile Printers	29-30
○ Wifi HDMI Display Device	31
○ Nationwide Network	32





ABOUT ESY



- The Indian arm for Pineapple Resources Berhad (PRB), Kuala Lumpur, Malaysia (ESY Group of Companies)
- Opened first office in Chennai in the year 2012
- Launched ESYINK – the lowest cost CISS in 2012
- Crossed 1 lac customers in the year 2013
- Winner Of VAR India Marketing Wizard Award - 2013
- Opened its 2nd office in Gurugram in 2014
- Became ISO 9001-2008 certified company
- Launched ESYCAST – the Wi-Fi HDMI streamer in the year 2014
- Crossed 4 lac customers in 2014
- Active member in MAIT ,India.
- Winner of Kerala State Business Excellence Award – 2014
- Launched ESYAclas POS Printers in 2015
- Opened third office in Delhi
- Winner of CESS India Award 2015
- Winner of DT Award 2015
- Winner of NCN Award 2016
- Launched ESYPOS scanners in 2016
- Opened fourth office in Cochin
- Winner of Best POS Printer in India.
- Winner of DT Most Innovative Products.
- Winner of ELCINA EFY 2016.
- Crossed 1 million customers in India
- Launched ESYPOS Label Printer series in 2017.
- Launched the World's Smallest Touch POS in 2017



AWARDS AND ACCOLADES



DT AWARD 2016 ▶
Best POS Printer Brand
ESYAclas PP7



◀ **NCN INDIA AWARD 2016**
Best user friendly POS Printer
ESYAclas PP7



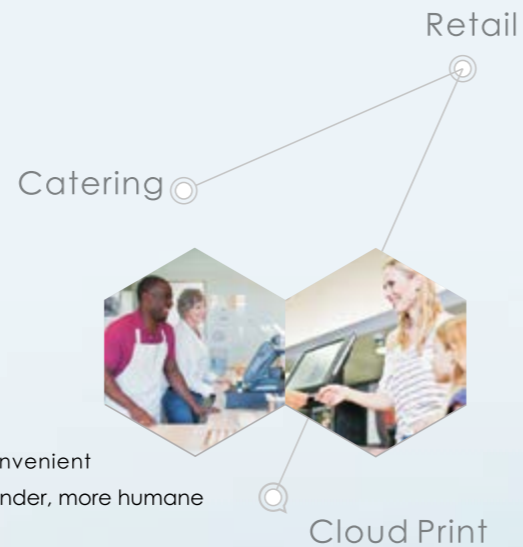
ESYPOS SMART TOUCH POS

ESP 5313

3" Smart Printer
Receipt & Space Label Printing Dual Mode

Features:

- ▶ 9" TN LCD screen with a resolution of 1024 * 600, clear big screen
- ▶ Quad-core CPU, 1.6GHz, quick response
- ▶ Android 5.1 operating system compatibility
- ▶ 3 USB ports for multiple USB devices connection
- ▶ Tablet with built-in Wi-Fi and Bluetooth
- ▶ Printer Wi-Fi, Bluetooth and 3G module optional
- ▶ Suitable for 20mm ~ 80mm (including backing) paper widths, flexible and convenient
- ▶ Built-in speakers and provide an external audio jack, easy to send single reminder, more humane
- ▶ Label printing and receipt printing dual mode, switchable via ESY tool



Specification	
Display	9" TN LCD, resolution: 1024*600
Operation	Multi-touch, capacitive panel
SOC	Quad core, integrated CPU, 1.6GHZ
RAM	DDR3, 1GB
ROM	1~2 GB
Flash	8 GB
TF card	1-32 GB
Ethernet 【standard】	100M (IEEE 802.3u)
USB 【standard】	USB 2.0
Wi-Fi 【standard】	Built in Wi-Fi (IEEE 802.11 b /g/n)
Bluetooth 【standard】	Built in Bluetooth
3G module 【Optional】	HUAWEI E1220S

Paper	
Paper type	Thermal paper roll adhesive thermal label roll(continuous type or with gap)
Paper width	20 ~ 80mm
Paper diameter	100mm max.

Printer	
Print method	Direct thermal printing
Resolution	203DPI
Print speed	127mm/s
Print width	72 mm max.
Cutter	No auto cutter, paper tear off via blade
Print head temperature detection	Thermal sensitive resistance
Print head position detection	Micro switch
Paper sensor	Photo electricity
Barcode	CODE128, EAN128, ITF, CODE39, CODE93, EAN13, EAN13+2, EAN13+5, EAN8, EAN8+2, EAN8+5, CODABAR, POSTNET, UPCA-A, UPCA+2, UPCA+5, UPC-E, UPCE+2, UPC-E+5, CPOST, MSI, MSIC, PLESSEY, ITF14, EAN14, QRCODE
Character font	FONT 0 ~ FONT 8
Enlargement & rotation	1~10 times enlargement horizontally and vertically Rotation printing in 0°, 90°, 270°, 360°
Graphic logo	PCX, BMP can be uploaded into printer
Dimension & weight	Length: 245mm; Width: 150mm; Height: 168mm; Weight: 1.8kg

Power	
Power input	24VDC

Environment	
Operation	Temperature: 5~45℃ Humidity: 20~80%RH (no condensing)
Storage	Temperature: -10~50℃ Humidity: ≤93%RH (40℃)

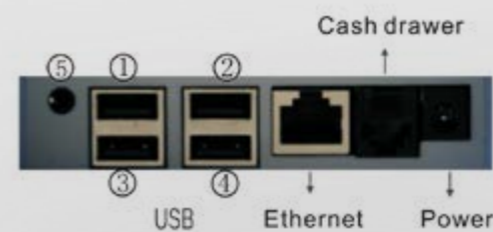


ESYPOS SMART TOUCH POS

Android Touch POS with 3" printer

SIMPLE
BETTER
FASTER

LEADING TECHNOLOGY



- ① USB port for PC to connect
- ②③④ For external USB devices to connect
- ⑤ External Audio Interface





ESYAclas All-in-one TOUCH POS

Unique Features

- World's first All-In-One POS Design : Integrated with Touch Screen, Printer, Customer Display*, MagCard Reader*, NFC/M1 Card Reader.I-Button*, CCD*, GPRS/WCDMA Module*, Bluetooth*, WiFi* etc. (items marked with * are optional.)
- Intel Quad-Core processor of high performance and low consumption, ensuring a suitable, efficient and safe system operation.
- Bezel free capacitive touch screen, with professional waterproof design and superb user experience.
- Inbuilt 3Ah UPS, avoiding data loss caused by power shortage.
- Diversified ports: internal WiFi, BT, 3G, 4G (optional), Ethernet, USB, RS232 and cash drawer port
- Easy loading mechanism, able to replace paper roll quickly. Function of black mark detection supports to print tickets with fixed length.
- Modularized hardware design, convenient to upgrade and maintain.
- Supports remote system management, data maintenance and remote upgrade.

Model	POVX	
Processor	Intel Z3735F, Quadcore 1.83 Ghz	
SDRAM	2 GB	
Flash ROM	32 GB eMMC	
OS	Android 4.4 / Windows 8.1 with Bing (32-bit)	
Power Supply	13.8 VDC	
Battery (Optional)	7.4 V, 3000 mAH	
Display	Operator	6" TFT LCD, 720 * 1280 pixels
	Interactive Interface	Capactive
	Customer	6 Characters + 8 Digital VFD / 32 * 144 LCD
I/O Port	Serial Port	1 external, 1 internal for GPRS
	LAN Port	10M / 100M
	USB	1 * USB 2.0 (host), MicroUSB-1*USB 2.0
	Cash Drawer Port	1 * RJ11
	SD Card	1 * SD Card
	Options	WiFi
Bluetooth		Built-in Bluetooth
GPRS / 3G		GPRS / WCDMA module
RFID		NFC / M1 module
MSR		3 tracks magnetic reader
Scanner		CCD / CMOS
Printer		Printer
	Print Speed	150 mm/s
Dimensions	Length (mm)	114
	Width (mm)	53
	Height (mm)	46
	Weight	0.65 Kg



WORLD'S SMALLEST ALL-IN-ONE TOUCH POS



- Unique power saving design that supports 8 hours standby or 200 print through battery.
- Tiny dimension design that easily hold the device on hand for mobile use.



200
bills print out

8 hrs
standby



ESYAclas All-IN-ONE ARM POS

UNIQUE FUNCTIONS

- World's first design that provides "cloud backup" mini touch Pad POS electrical cash register.
- World's first All-in-one POS Design: integrated with Touch Screen, Printer, Magcard reader, NFC card reader, WCDMA, Bluetooth, WIFI, Camera etc, to meet commercial needs
- A9 dual-core processor of high performance and low consumption, ensuring a stable, efficient and safe system operation.
- Bezel free capacitive touch screen, with professional waterproof design and superb user experience.
- Inbuilt lithium battery, avoiding data loss caused by power shortage.

EXCELLENT FUNCTIONS

- Embedded with optional POS software meeting various business application demands, such as retail, convenient stores, restaurants, supermarkets, etc. It is able to visit remote data base directly through webservice, build chain network and support online upgrade.
- 6" capacitive touch with elegant appearance and full-screen touch experience. High resolution, making graphical software interface accessible. Easy to use.
- Supports Android4.4 os. enables software companies to cooperate and develop system solutions
- Easy loading mechanism, able to replace paper roll quickly. Function of black mark detection is supported to print tickets with fixed length.
- Supports remote system management, data maintenance and remote upgrade.

SPECIFICATION

Processor	Rockchip RK3066,dual-coreA9,1.6Ghz	
RAM	1GB DDR3	
Storage	8GB eMMC	
System	Android4.4	
Display screen	5.94"TFT LCD,540*960dpi	
Touch panel	Capacitive	
Peripheral	Bluetooth	Bluetooth3.0+BluetoothBLE
	WIFI	IEEE 802.11b/g/n
	3G	Support WCDMA/GSM900/DCS1800.Inbuilt PIFA antenna
	NFC	13.56MHz,Operating Distance5~8cm,Support ISO14443, ISO18092
	Magnetic head	two tracks magnetic head and card slot ,support magnetic stripe card operation
I/O Port	Camera	3 mega-pixel camera ,auto-focusing ,Support one dimensional code and qr code scanning
	Micro USB	USB OTG
	Headset jack	3.5mm aperture
	Loudspeaker	Support
	Microphone	Support encryption acoustic verify
	SIM card	compatible 3V/1.8V
	PSAM card	Support 128 digital asymmetric encryption
AC power port	9V 2A	
Battery	Li. battery 7.4V 2250mAH	
Printer	2" without cutter thermal printer(57mmxΦ40mm)	
Dimension	202.9(L)*93.2(W)*56.1(H)mm	
Weight	0.52kg	



ESYAclas ALL-IN-ONE ARM POS



ESYAclas CRLX POS CASH REGISTER

SPECIFICATIONS	
Model	CRLX
Printer	1 x 57 mm thermal printer
Max. PLU	10000 PLUs
Max. Departments	16 Departments
Max Hotkeys	6 hotkeys
Cashier / Clerks	25 Cashiers
Keyboard	Patented Stroke keyboard, 36 function keys, 6 hotkeys, Termination keys
Display	65*132 alphanumeric LCD operator - display 14 alphanumeric LCD customer - display
Connective Ports	RS-232 for Barcode / PC / scale, PS/2 for Barcode, Drawer, Ethernet for PC/External Printer, USB for PC Connectivity
Retail Functions	Stock management, Duplicate bill, Price & VIP price, Salesman name on bill, Clerk name on bill, RA & PO function, Surcharge, Separate keys for discount, Price, mark up, etc, Initialise report Sl. No, Machine No. program, KOT
Types of Reports	PLU report, Dept report, Clerk report, Term report, Stock report, X / Z Term Report, Commission report, Bill wise summary report, Monthly report, Tax report, Yearly Report, Salesman Report, X/ Z Daily Report
Optional	Cash Drawer, Barcode Scanner, RS 232 / USB / Ethernet Cable, USB Box, Multiplexer, GPRS
Accessories	1 RS232 / USB Cable, 1 CD for PC S/W, 1 SMPS, User manual
Power	Input : AC: SMPS 100-240V Output : DC: 13.8v, 2.5A Rechargeable Battery : DC 12v 2.3AH
Dimensions	392.84 * 322 * 162.99 mm

ESYAclas POS CASH REGISTER



Unique Features

Most successful Small sized POS cash Register in the World

- SMALL in size, BIG in function with 10,000 PLU
- Perfectly suitable for small-medium Retail & Restaurants
- Inbuilt UPS Board for Power Back up to 100 bills/10 Hours
- Well-built 36 Raised keyboard
- Inbuilt 57 mm Printer with maximum 150 mm/sec speed
- Display :-
 - 14 alphanumeric LCD Customer display
 - 65*132 alphanumeric LCD Operator display
- Prints multi reports such as daily, tax, PLU, periodical, Bill wise etc



ESYAclas CR6X POS CASH REGISTER

SPECIFICATIONS	
Model	CR6X
Printer	1 x 57 mm thermal printer
Max. PLU	40000 PLUs
Max. Departments	99 Departments
Hotkeys	80 * 2 hotkeys
Cashier / Clerks	25 Cashiers,
Keyboard	Patented Stroke keyboard, 28 function keys, 80 * 2 hotkeys, Termination keys
Display	65*132 alphanumeric LCD operator - display, 9 alphanumeric LCD customer - display
Connective Ports	RS-232 for Barcode / PC / scale, PS/2 for Barcode, Drawer, Ethernet for PC/ External Printer, USB for PC Connectivity
Retail Functions	Stock management, Duplicate bill, Price & VIP price, Salesman name on bill, Clerk name on bill, RA & PO function, Surcharge, Separate keys for discount, Price, mark up, etc, Font size change, Initialise bill SI. No, Initialise report SI. No, Machine No. program, KOT
Types of Reports	PLU report, Dept report, Clerk report, Term report, Stock report, Return report, Cash-in drawer report, X / Z Term Report, Commission report, Bill wise summary report, Monthly report, Tax report, Yearly Report, Salesman Report, X/Z Daily Report
Optional	Cash Drawer, Barcode Scanner, RS 232 / USB / Ethernet Cable, USB Box, Multiplexer, GPRS
Accessories	1 RS232 / USB Cable, 1 CD for PC S/W, 1 SMPS, User manual
Power	Input : AC: SMPS 100-240V, Output: DC: 13.8v, 2.5A, Rechargeable battery : DC 12v 2.3AH
Dimensions	392.84 * 322 * 162.99 mm

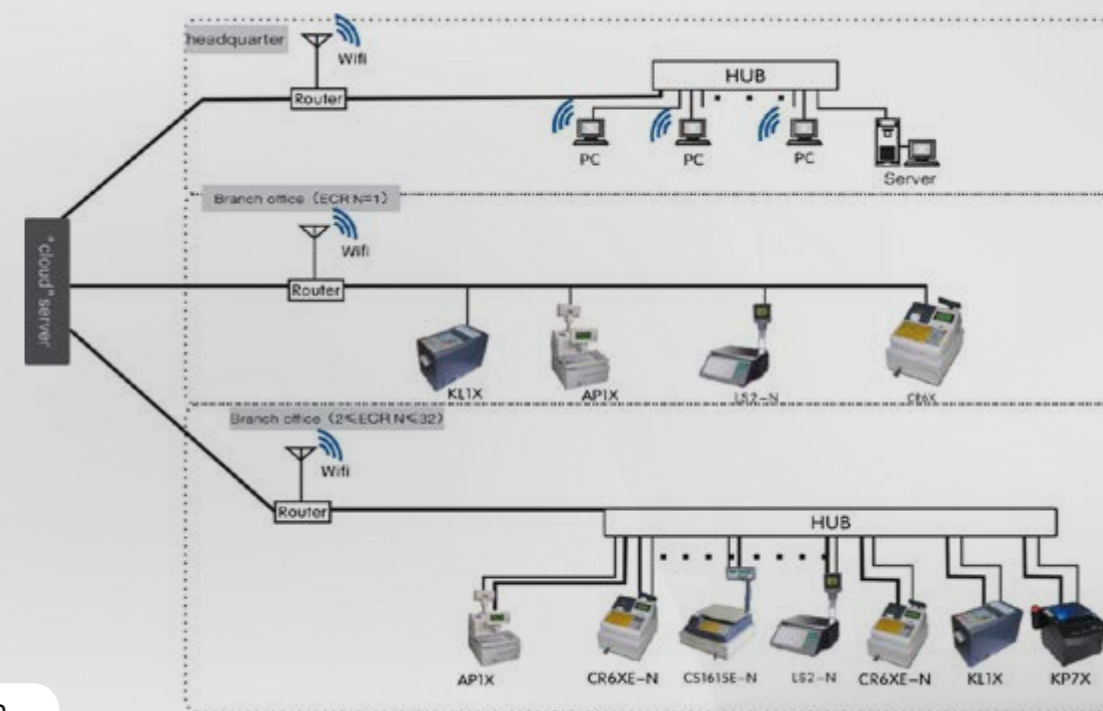


ESYAclas POS CASH REGISTER

FEATURES :

The most reliable and largest selling POS Cash Register in the World. A unique design that adopts a single-chip to make Cloud ECR with keyboard in the world. Able to establish a chain store real time on-line management via phone line or ADSL.

- 40000 ACTIVE PLU
- 80x2 hotkeys , 28 functions
- Rotatable VFD Customer Display
- Larger Operator Display - 5 lines
- Originally-developed, innovative removable and renewable hot keypad
- Built in Ethernet and supports Wi-Fi and GPRS for transmitting data to main server.
- Different software editions for Restaurant, Retail, Hospitality, Garment and Entertainment etc.



ESYAclas PP7 SERIES POS PRINTERS

Unique Functions



Upto 250 mm/s high Print speed
Increases sales efficiency & shortens customer waiting.



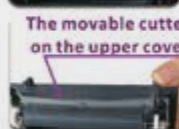
Optional customer display
Increases customer convenience by displaying price and total amount.



Oblique paper sensor (patented)
Detects paper precisely, even if the paper is stuck to the end of the PP7X paper slot installed in different places (desktop/ hanging on the wall)



Optional soft-definition key & operator display
Operation on printer directly without command from PC POS is available.



Special Paper cutter and Easy Paper Loading Design

The movable cutter is on the upper cover hence paper jam is easily eliminated by opening the upper cover (without opening the front cover) and moving the gear to withdraw the cutter manually unlike the traditional printers in the market whose movable cutter is designed in the front seat which makes removal of jammed paper even more difficult.

With the benefit of agile black mark detector (opt.), PP7X locates printing position quickly, supports detection in left and right direction, also it can connect with operator and customer display (optional) and function keyboard (optional) to work as receipt printer and fiscal printer

SPECIFICATIONS		
Optional type	PP7NX	PP7HX
Speed	150mm/s	250mm/s
Power Supply	DC 12V/2A	DC 24V/2A
Printing Method	Thermal Print	
Resolution	203 dpi	
Paper	Paper Type	Thermal Paper
	Paper Width	79.5 ± 0.5
	External diameter	80mm
Paper installation type	Unique mechanism that make paper installation easy	
Character print	Character set	ANK character set, 12x24dot, 24x24 dot
	Number of columns	48 columns
	Barcode type	UPC-A, UPC-E, Code128, EAN128, Jan8, Jan12(EAN) Interleaved 2 of 45, Codabar
	Data receiving buffer	16KB
	Flash memory	16M bit
Optional Function	Fiscal(with operator and customer display), customer display, operator display, black mark detector	
Interface	RS232,USB (Optional) Wifi,Parallel,Ethernet,BT	
Cash drawer driver	1 port(compatible with EPSON)	
Printer head life	150km(recommend to use high quality thermal paper, such as OJI, PD-160R or Aclas paper.)	
Paper-cutter life	1500,000 times	
Cash drawer impulse	DC 24V/1A	
Work temperature	-5C° ~40° C	
Work humidity	5%R.H. ~95%R.H	
Driver	Win9X, WinME, Win2000, WinNT, WinXP, Win7, Win8.1, Compatible with EPSON, Win10	
Printing command	Compatible with command ESC/POS	
Size	The printer with customer display: 176*234*208mm,	
	The printer without customer display: 145*194*135.8mm	



ESYAclas POS THERMAL PRINTERS

Amazing Prints at Astounding Speed

- High speed printing
- Auto Paper Cutter
- High resolution
- Oblique Paper Sensing (Patented)
- Memory of logo & printing
- Zero Paper Jam
- Easy Maintenance
- Various Interfaces
- Compatible with ESC/POS Commands
- Easy drop in paper load
- Agile Black Mark Detector (optional)
- Nation Wide Service Network

Best POS
Printer Award
- DT 2016

Best POS
Printer Award
- NCN 2016



ESYPOS ETP 5211 THERMAL PRINTER

Enhanced Features:

Smart Driver Install

Just connect your ETP 5211 to a PC or laptop with a USB cable to start

- * ESC/POS command compatible
- * High Printing Speed: upto 90mm/sec
- * Easy installation via USB interface
- * Supports NV logo upload printing
- * High-performance CPU : Processing speed more fast and stable than ever.



Connect to PC with USB cable

Built with ESYPOS quality and durability, ETP 5211 is an affordable and easy-to-install mini receipt printer, reliable and ideal for various thermal printing applications.

Model	ETP 5211	
Print method	Direct thermal line	
Print width	48mm	
Dot density	384dot/line (203 x203dpi)	
Print speed	upto 90mm/s	
Interface	USB	
Paper diameter	83mm	
Line space	3.75mm(can be adjusted by sending commands)	
Columns	Font A - 42columns or 48columns / Font B - 56columns or 64columns / Simplified/Traditional Chinese - 21columns or 24columns	
Character Size	ANK Font Font A: 12x24dots Font B: 9x17dots Simplified/Traditional Chinese: 24x24dots	
Code page	PC437/Katakana/PC850/PC860/PC863/PC865/West Europe/Greek/Hebrew/East Europe/Iran/WPC1252/PC866/PC852/PC858/Iranii/Latvian/Arabic/PT151,1251/PC737/WPC1257/Thai Vietnam/PC864/PC1001/(Latvian)/(PC1001)/(PT151,1251)/(WPC1257)/(PC864)/(Vietnam)/(Thai)	
Barcode type	UPC-A/UPC-E/JAN13/EAN13/JAN8/EAN8)CODE39/ITF/CODABAR/CODE93/CODE128	
Fonts	GB2312	
Data	4K bytes	
NV Flash	60K bytes	
Cashdrawer out	DC 12V/1A	
Power supply	DC 12V/3A	
Power adaptor	Input: AC 110V/220V, 50 ~ 60Hz Output: DC 12V/3A	
Weight	0.53KG	
Dimension	134 x 210 x 121mm	
Work environment	Temperature: 0 ~ 45°C, Humidity: 10 ~ 80%	
Storage environment	Temperature: -10 ~ 60°C, Humidity: 10 ~ 90%	



ESYPOS CASH DRAWERS

SLEEK, STYLISH, STURDY



Model: ESYPOS ECD 113
Dimensions: 405* 410 *90mm(W*L*H)
 15.9" 16.1" 3.5(W*L*H)
Drawer: Engineering Plastic
Casing: Steel construction
Front Panel: Metal
Bill Tray: wire bill clips 5-bill
Coin Tray: Removable
 3/4/5/6-coin

Media slot: 1-slot
Locable Lid: optional
Lock: 3-position Key Lock
Micro Switch/Sensor: Yes
I/O Interface: 6V-24V for RJ11 / RJ12 /
 Jack2.5 receipt printer interface
Durability: 1,000,000 operations
Colour: Black
Net Weight: 5.5 kgs



ESYPOS WIRED BARCODE SCANNERS

LIGHTER, LASER LIGHT SPEED

ESYPOS Laser Wired Barcode Scanners enables you to get light speed scan @350 per sec. to enhance the productivity of your people at the counter!

- Laser Optical Scanning
- High Speed Scanning Rate 350/sec
- USB Interface wired 1.5 Mtr Length
- Auto and Manual Mode
- Can read almost all 1D barcodes available in the industry*
- 1 year warranty



SPECIFICATIONS

Model	EBS 333
Scanning Technology	High Speed Laser
Laser Classification	EN60825-1, class 2
Light Source	650nm visible
Typical Read Range	0 mm–254 mm (0 in–10 in)
Scan Rate	350 scans / sec
Connectivity	Corded
Interface	USB / RS232 / PS/2
Scan Angle	±60°, ±65°, ±42°, left-right, forward-back, spin
Resolution	3mil high resolution series / 5mil long depth field series
Decode Capability	UPC/EAN, UPC/EAN with Supplementals, UCC/EAN 128, Code 39, Code 39 Full ASCII, Trioptic Code 39, Code 128, Code 128 Full ASCII, Interleaved 2 of 5, Discrete 2 of 5, Code 93, MSI, Code 11, RSS variants, Chinese 2 of 5, MSI/Plessey, UK/Plessey, UCC/EAN 128, chinese code, GS1 DataBar, RSS, series
Indicator	Beeper LED
Operation Mode	Handheld / Automatic
Temperature	0°C - 45°C, Operating:-40°C -60°C, Storage
Humidity	5 - 90% (non-condensing)
Durability	1.5 meter drop on concrete surface
Programming method	Manual
Ambient Illumination	0 ~ 100,000 LUX
Power Consumption	85 mA (Operating); 100 (Max)



ESYPOS 2D BARCODE SCANNERS

ESYPOS EBS 3312 enables you to get light speed scan@300 per sec. that too with the advanced PLANAR CMOS Technology!

- Scanning method - Planar CMOS Technology
- Scan rate 300 scans per second
- 360° Angle Scanning
- IP 54 rating on water resistance
- Nationwide Service Network
- 1 year warranty



SPECIFICATIONS

Model	EBS 3312
Light Source	White LED
Sighting Device	Red LED, 617 nm
Indicator	Green = decoding successfully; Red = fail to decode
Interface	USB
Scanning Type	Image
Scanning Angle	Angle of Pitch +- 70°, Angle of inclination +- 60°, Rotation +- 180°
Printing Contrast	Minimum 30% contrast
Decoding Capability	All standard 1D and 2D barcodes
Input Voltage	4 ~ 5.5 VDC
Operating Temperature	0° - 40°C
Storage Temperature	-40°C - 60°C
Humidity	5% - 95% (non-condensing)
Light Level	0 - 100,000 LUX
Shock Resistance	1.5 m drop on concrete surface
Resolution	4 mil
Scanning Speed	300 scans / sec

SPECIFICATIONS

Model	EBS 313WL (Laser)
CPU	32 Bit
Wireless	2.4G
Light Source	Visible light laser diode, wavelength 650±20 nm
Scan Speed	300
Current -Sleep Mode	yes
Resolution	5 mil PCS 45%
Scanning Angle	± 60°, ± 65°, ± 42°, (about turn)
Barcode/ Decode Capability	1D . UPC/EAN, EAN13, EAN 8, Code128, Code39, Code 39, Full ASCII, Coda bar, industrial /Interleaved 2 of 5, Code93, MSI, Code11, ISBN, ISSN, etc
Beeper Operation / Indicator	YES
Length	10M indoor 30M outdoor
Interface	HID USB USB virtuality COM
Connector Type	USB cable USB receiver
Input Voltage	5V
Operating Temperature	0°C - 50°C / 32°F to 122°F
DC transformers	USB
Storage	2MB Flash
Humidity	5% - 95% (non condensing)
Storage temperature	-40°C - 70°C / -40°F to 158°F
Power supply	5v 450mA
Battery capacity	480mAh
Intensity of bearing light	Immune to direct exposure of normal office,Retail Stores and factory lighting conditions, as well as direct exposure to sunlight

Model	EBS 315WL (Linear CCD Scanner)
Processor	32-bit ARM Cortex-M3 MCU
Transmission Frequency	2.4GHZ
RAM Capacity	2 MB
Transmission Distance	30 meters open linear distance
Decoding Capability	UPC/EAN, UPC/EAN with Supplementals, UCC/EAN 128, Code 39, Code 39 Full ASCII, Trioptic Code 39, Code 128, Code 128 Full ASCII, Codabar, Interleaved 2 of 5, Discrete 2 of 5, Code 93, MSI, Code 11, RSS variants, Chinese 2 of 5, MSI/Plessey, UK/Plessey, UCC/ EAN 128, chinese code, GS1 DataBar, RSS, series
Resolution	4mil(0.1mm), PCS45%
Scanning speed	400 scans / sec
Trigger mode	Manual, Continuous Scanning
Scan Angles	Roll35°,Pitch65°,Yaw65°
Power Supply	DC 5V±5%
Charging cable	1.5m universal USB cable
Battery	3.7V 1500mAH 18650 lithium battery
Operating Temp.	0 to 50°C / 32 to 122°F Humidity - 20~95% (non-condensing)
Storage Temp.	-20 to 70°C / -4 to 158°F Humidity - 20~95% (non-condensing)
Shock Resistance	1.5m free fall on concrete surface

LIGHTER, LASER LIGHT SPEED

ESYPOS EBS 313 WL enables you to get light speed scan@300 per sec that too wireless! Now, enhance the productivity of your people on the counter or in the field with this high speed wireless scanner !

- Fastest Wireless 1D Scanner
- Speed upto 300 scans per sec
- 1 lakh Barcode Storage Capacity
- Available with a sturdy dock/holder/stand
- Nation Wide Service Network
- 1 year warranty



ESYPOS WIRELESS BARCODE SCANNERS



ESYPOS EBS 315 WL enables you to get light speed scan@400 per sec using the advanced linear CCD technology. With enhanced features and latest design, this high speed wireless CCD scanners is the perfect boost at your retail counter.

- Fastest Wireless 1D CCD Scanner
- Speed upto 400 scans per sec
- 1 lakh Barcode Storage Capacity*
- Can read almost all 1D barcodes available in the industry*
- Long hours of battery backup
- Nation Wide Service Network
- 1 year warranty

ESYPOS ELP - 5031T

Print specification		Ribbon specification	
Model	ELP-5031T	Ribbon diameter	Max. 67 mm
Dot density	203 dots/inch(8dots/mm)	Ribbon length	300m
Print method	Thermal Transfer & Direct Thermal	Ribbon axis size	1 inch (25.4 mm)
Dot size(W×L)	0.125×0.125 mm (1 mm = 11.8 dots)	Ribbon width	Max. 110 mm Min. 30 mm
Print speed (inch/s)	2~6inch/s	Ribbon winding method	outward winding
Maximum print width	108 mm(4.25")	Media specification	
Maximum print length	2286 mm(90")	Paper roll diameter(Max.)	127 mm(5")OD
Pulse excitation	1*108 pulse	Paper type	Continuous paper , paper with interspaces, folding paper, plain paper, black mark paper
Thermal film(reliability)	50KM	Paper rolling up method	Printing side outward rolling / inward rolling
Specifications		Paper width (upper & bottom paper)	Max.120 mm(4.72") Min.20 mm(0.78")
Dimension	285x210x180mm (LxWxH)	The thickness of the paper (upper & bottom paper)	Max.0.254 mm(10 mil) Min.0.06 mm(2.36 mil)
Weight	2.09KG	Paper roll axis size	25.4 mm~38 mm(1"~1.5") 10~2286 mm(0.39"~90")
Power supply	Input: AC 100-240V Output: DC 24V 2.5A,60W	Label length	Remark: If label length less than 25.4mm(1 inch), label paper with perforations are recommended, labels can be torn off easily.
Environment	Work environment :	Gap size	Min.2 mm(0.09")
	temperature 5~40°C (41~104°F), humidity 25~85% Storage : temperature-40~60°C (-40~140°F), humidity 10~90%	Software	
Interface	Serial+USB+Parallel+Ethernet	Editing Software	Nicelabel SE/LabelShop
Memory	T:RAM 8M FLASH 4M	Driver	Windows 2000/XP/Vista/Win7/8/8.1/10 Windows Server 2003&2008
Font Size	FONT O to FONT 8 Code39,Code93,Code128UCC subsets A, B, C, Codabar, Interleaved 2 of 5, EAN-8	DLL	Windows 2000, XP and Vista
Enlargement&Rotation	1 to 10 times enlargement in both directions: 0°, 90°, 270°, 360°rotation		
Emulation	TSPL		

Features (ELP-5031T)

- 203 dpi (8 dots/mm) resolutions; Ultra high print speed 6ips (152mm/sec.).
- Supports Direct Thermal & Thermal Transfer modes.
- 4 interfaces designed for multiple requirements.
- 120mm wide paper exit for optional for 8.4" industrial-grade large roll.
- Supports 300 meter ribbon
- Easy to operate and produce perfect quality printing, such as Healthcare, Transportation, Retail, Logistics.



DESKTOP LABEL PRINTER - THERMAL TRANSFER TECHNOLOGY



Ultra high print speed.

Multi interfaces available    



ESYPOS ELP -531T

Specification

Printing Specification	Printing Method	Direct Thermal and Thermal Transfer Printing
	Printing Speed	2~6inch/s
	Interface	USB
	Resolution	203dots/inch (8dots/mm)
	Printing Mode	TT & DT
	Print Point	0.125x0.125mm (1mm=8dots)
	Maximum Print Width	104mm ~108mm
	Maximum Length	2286mm (90°)
General Specification	Printer Size	278x210x180 (WxDxH)
	Weight	2.09KG
	Working Environment	5~45°C (41~104°F) , 25~85%
	Storing Environment	-10~50°C (-10~104°F) , 10~90%
	Impulse Excitation	1x108Pulses
	Abrasion Performance of Print Head	30KM
	Power	Input : AC 110V/240V. Output : DC24V/2.5V.60W
	Accessories	Holder Frame (Optional)
Ribbon Specification	Ribbon OD	67 mm max.
	Length	300m
	Size of rouleau	1inch (2.54mm)
	Ribboon Width	Max.110mm, Min.30mm
	Winding Mode	Printing side is outward
Printing Consumable Specification	Maximum outer diameter (Inside)	127mm (5") OD
	Type	Continuous paper rolls, gap rolls, folded paper, plain paper, black mark paper rolls
	Winding Mode of Rolls	Printing side is outward
	Paper Width (include release paper)	120mm (4.72") max. 20mm (0.78") min.
	Paper Thickness	0.254mm (10mi) max. 0.06mm (2.36mil) min.
	Rouleau Size	25.4mm~38mm (1"~1.5")
	Gap Label Spacing	2mm (0.09") min.
	Label Length	10~2286mm (0.39"~90") Notice: If the label length is less than 25.4mm (1") , please use label paper with tooth hole between the gap for tearing easier.
Software	Editing Software	Nicelabel SE /LabelShop
	Driver	Windows 2000/XP/Vista/Win7/8/8.1/10 Windows Server 2003&2008
	DLL	Windows 2000、XP and Vista

Product Features

- Maximum Paper width - 120 mm, with more options for width of labels rolls.
- Single motor driving
- Double sensor design, penetrating sensor and reflecting sensor
- New design mother board, suitable for multiple interfaces.
- Direct thermal and thermal Transfer printing, more options for printing consumbe,thermal transfer printing enables you to keep label for longer.
- Integrated structure, sturdy and durable, perfect working
- New structure of driving, smoother printing
- External paper-feeding slot, supporting outer diameter 8.4 inches industrial grade paper rolls (Optional)



DESKTOP LABEL PRINTER - DUAL PRINTING TECHNOLOGY



Thermal transfer + Direct Thermal
Ultra high print speed.

ESYPOS ELP - 5013D

SPECIFICATIONS

PRINTING	Print Method	Direct Thermal	
	Print Resolution	203DPI	
	Print Width	Max.104mm (4.09")	
	Print Speed	2~8 inch/s (50-203mm/s)	
	Memory	DRAM: 8M FLASH: 4M	
	Print head temperature detect	Thermal sensitive resistance	
	Print Head Position detect	Mircoswitch	
	Paper sensor	Photoelectric sensor	
Interface	USB, USB+RS232		
BARCODE TYPE	1D Barcode	1D Barcode: CODE128, EAN128, ITF, CODE39, CODE93, EAN13, EAN13+2, EAN13+5, EAN8, EAN8+2, EAN8+5, CODABAR, POSTNET, UPC-A, UPCA+2, UPCA+5, UPC-E, UPCE+2, UPC-E+5, CPOST, MSI, MSIC, PLESSEY, ITF14, EAN14 2D Barcode QRCODE	
	2D Barcode		
CHARACTER FONT	2D Barcode		
GRAPHICS	Character Size		Font 0 ~ font 8
	Enlargement&Rotation		"1 ~10 times enlargement in both directions; (0°, 90°, 270°, 360°rotation")
MEDIA	Graphics Processing		Support BMP/PCX/BAS files
	Media Type		Thermal paper roll, thermal sticker, fan fold paper etc.
	Media Width		40mm-120mm
	Media Roll OD		130mm OD
	Paper Off Type		Tear off
POWER SUPPLY	Power supply	DC24V/2A	
SOFTWARE	Editing Software	Nicelabel SE /LabelShop	
	Driver	Windows 2000/XP/Vista/Win7/8/8.1/10 Windows Server 2003&2008	
	DLL	Windows 2000, XP and Vista	

Product Features

- Direct Thermal Printing Technology
- Fan-folded or Roll direct thermal labels
- Supports automatic paper-feeding , first label printed without waste
- 2~8inch/sec high print speed
- Supports 1D and 2D (QRCode) barcode printing
- Temperature automatic control.
- Supports label gap autocalibration
- Fit for 4"waybill, Shipping label, Product label printing



DESKTOP LABEL PRINTER - SLEEK LABEL PRINTER

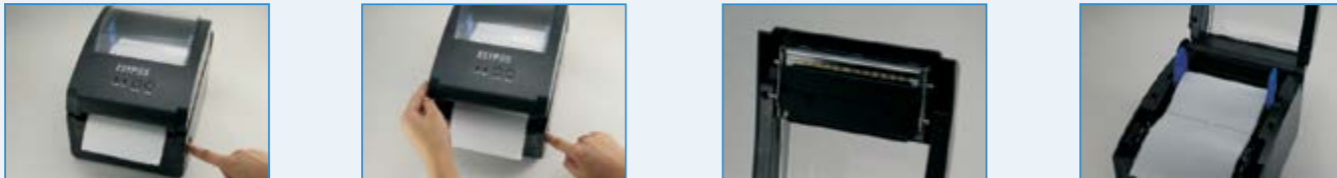


Ultra super print speed
Sleek and stylish design



ESYPOS ELP - 513D

EASY OPERATIONS



Product	ELP 513D	
Print method	Direct thermal	
Dot density	203dots/inch(8 dots/mm)	
Max. print speed	200mm(8")/second	
Interface	Serial+USB	
Print width	Maximum:104 mm(4")	
Print head reliability	50KM	
Dimension	180(W)x176(H)x238(L)	
Weight	2.09KG	
Power supply	Input:AC100-240V Output:DC 24V 2.5A	
Work environment	Temperature:5~45°C , Humidity:25~85%	
Storage environment	Temperature:-10~50°C ,Humidity:10~90%	
Barcode type	UPC-A/UPC-E/JAN13 (EAN13)/JAN8 (EAN8) COD39/ITF/CODABAR/CODE93/ CODE128 subsets A,B/Codebar/EAN-8/ EAN-13/UPC-A/UPC-E, EAN/UPC2(5)digits add-on MSI/MSIC/PLEASEEY/ CPOST/EAN14/QR CODE/EMP&PCX	
Memory	2MB SDRAM 2MB FLASH	
Paper type	Continuous,gap,folder,punched	
Ribbon rolling up method	Outward rolling	
Paper rolling up method	Printing side outward rolling/inward rolling	
Paper thickness (Label+backing sheet)	Max.0.254mm(10mil) Min.0.06mm(2.36mil)	
Accessories	Power adapterx1,Paper cable x1,Ribbon& Rollx1set,data cabledx1	
Software	Editing Software	Nicelabel SE/LabelShop
	Driver	Windows 2000/XP/Vista/Win7/8/8.1/10 Windows Server 2003&2008
	DLL	Windows 2000, XP and Vista



Health

Postal

Manu-
facture

Logistics

Retail

DESKTOP LABEL PRINTER - DIRECT THERMAL TECHNOLOGY

4" Print width ,203dpi,8inch/sec



Key Features



- ESYPOS 4" thermal printer ,
- Low noise direct thermal printing,
- Designed with reflective and transmissive dual sensor for perfect label paper detection,
- Brief and attractive design,
- Will be your ideal choice to meet wider format printing requirements.



ESYPOS EPTP - 5011

SPECIFICATIONS

Model		EPLT5011	EPTP5011
Print	Print Model	Label Printer	Thermal Printer
	Resolution	203 DPI	203 DPI
	Print Speed	60 mm /s	60 mm /s
	Interface	USB / USB + WIFI / USB + Bluetooth 4.0 / USB + Wi-Fi + Bluetooth 4.0	USB / USB + WIFI / USB + Bluetooth 4.0 / USB + Wi-Fi + Bluetooth 4.0
	Print Width	80 mm	72 mm
	Print Area	80 mm * 200 mm	-
	Memory	DRAM	128 KB
		Flash	128 KB
			NVFLASH: 60 KB
	Command Set		TSPL
Barcode, Font and Image	Code Page	PC437, Katakana, PC850, PC860, PC863, PC865, West Europe, Greek, Hebrew, East Europe, Iran, WPC1252, PC866, PC852, PC858, IranII, Latvian, Arabic, PT151,1251, PC747, Vietnam, Uyгур, Thai	PC437, Katakana, PC850, PC860, PC863, PC865, West Europe, Greek, Hebrew, East Europe, Iran, WPC1252, PC866, PC852, PC858, IranII, Latvian, Arabic, PT151,1251, PC747, Vietnam, Uyгур, Thai
	Barcode	Code 39 / 93 / 128 / EAN 8 / 13 / 128 Codabar / EAN 8 + 2 / EAN8 + 5 / EAN 13 + 2 / EAN 13 +5 / UPCA /UPCE / QR Code	Code 39 / 93 / 128 / EAN 8 / 13 / 128 Codabar / EAN 8 + 2 / EAN8 + 5 / EAN 13 + 2 / EAN 13 +5 / UPCA /UPCE / QR Code
	Font	ANK Font: FontA: 12*24dots; FontB: 9*17dots; Simplified/Traditional Chinese Character, Korean: 24*24dots	ANK Font: FontA: 12*24dots; FontB: 9*17dots; Simplified/Traditional Chinese Character, Korean: 24*24dots
	Font Size	Font 1	Font 1: 1.1.5 mm (8 * 12 dots)
		Font 2	Font 2~8 refer to programming manual
		Font 3	Chinese: 3.0 * 3.0 (24 * 24 dot)
	Enlargement		1 ~ 10 times enlargement in both directions (Rotation in 0°, 90°, 270°, 360° rotation)
Print Media	Image	PCX or BMP can be downloaded into the printer FLASH or DRAM	Support different density bitmap and download bitmap printing
	Paper Type	Roll Paper	Roll Paper
	Paper Width	Adhesive Paper	80 mm
Power Supply	Power Supply	Power Adapter - Input	220 V
		Output	9V / 1A
		Battery	7V / 2200 mAH
		Charging Time	3 - 5 hrs
Environment Characteristic	Environment	Operating Temperature in Celsius	5 ~ 45 Humidity < 93% RH non condensing
		Storage Temperature in Celsius	5 ~ 45 Humidity < 93% RH non condensing
		Dimension	131 * 107 * 58 mm (L * W * H)
Lifetime	Mechanism Life		50 KM
Software	Software	Tools	ESYTOOLS (Android), ESYSETTOOLS (Windows)
		Drivers	Windows XP / ME / Vista / 7 / 8 / 8.1 / 10
		Servers - Windows 2000 / 2003 / 2008	Servers - Windows 2000 / 2003 / 2008
		Software	Android SDK / IOS SDK / ESYPOS Printer



ESYPOS PORTABLE THERMAL PRINTER EPTP 5011

Features

- Drop in paper loading, easy operation.
- Thermal Paper: width 80mm, diameter 50mm, thickness 0.06~0.08mm
- Lithium battery: 2200mAh/7.4V, 7days standby time.
- Power adapter: 9V-1A, AC100-220V
- Low-power mechanism.
- USB+Bluetooth port, support Android and iOS and Windows system.
- ESC/POS commands.
- Support 1D barcode, QR barcode.
- Support virtual serial port.





ESYCAST

Stream movies, pictures, games and more from your smartphone onto your HDTV that too wireless. Do wonders with wireless presentations at your office. It's the only streamer which creates its own WiFi hotspot and gives you a larger than life experience.



- Multi OS support: Android, IOS, Windows, Mac OS
- Universally compatible across devices (smartphones, tablets, laptops)*
- First Universal Adapter (supports Miracast, DLNA and Airplay simultaneously)
- Creates its own WiFi hotspot
- Online firmware update available
- High quality video streaming

IF IT'S ON YOUR MOBILE, TABLET, LAPTOP IT'S ON YOUR **HDTV**



Wifi HDMI STREAMER

NATIONWIDE NETWORK



ESY FACTS

27
STATES

315
SALES PARTNERS

243
SERVICE CENTERS

1 MILLION +
CUSTOMERS.



ESY Tech Resources India Pvt Ltd

An ISO 9001:2008 Certified Company

203, 2nd Floor, Vipul Trade Centre, Sohna Road, Gurugram, Haryana 122 018

Mail to – support@esy.co.in Toll Free Number – 1800 102 8482